

# Vito and Vito Tourer



Overseas model shown throughout.

Mercedes-Benz



# Success stands out.

The new Vito.



Overseas model shown.

Whether you're running an established business or laying the foundations for success, a Mercedes-Benz Vito Panel Van is a reflection of your commitment to your work. With innovative technology in the front and exceptional versatility in the back, the Vito will drive your business forward.

The Vito is also a superior work resource. In addition, innovative assistance and safety systems help you and your team arrive at any job safely. Front-wheel and rear-wheel drive provide additional versatility.

A dedicated team of Mercedes-Benz service professionals are available to keep your most reliable business partner on the road.

Overseas model shown.



# Professional cargo transport

The Vito Panel Van.

Overseas model shown.

The Vito Panel Van can comprehensively assist you in your daily work: it can handle load volumes of up to 6.6 m<sup>3</sup>. As you'd expect from a Mercedes-Benz, the safety equipment and the technically sophisticated assistance systems are exemplary. All Vito Panel Van models are equipped with ATTENTION Assist <sup>(7)</sup>, Crosswind Assist <sup>(7)</sup>, Lane Keeping Assist, and reversing camera as standard. In addition to the full suite of safety equipment, the new standard Audio 30 multimedia unit features a 7-inch LCD touchscreen, digital radio and Bluetooth<sup>®</sup> media streaming. Android Auto™ and Apple CarPlay™ smartphone integration is also a standard feature. You can be confident you are choosing the best vehicle for your business.

- Two different engines with three different power and torque outputs
- Load compartment volume of up to 6.6 m<sup>3</sup>
- Two drive variants: Front-wheel drive and rear-wheel drive
- Vehicle height under two meters

Overseas model shown.



Transports people and cargo alike.  
The Vito Crew Cab. Overseas model shown.

Designed with the motto “one for all” in mind, the Vito Crew Cab makes life easy if you would like to transport people and cargo at the same time, you couldn't find a more versatile and reliable partner.

Optionally equipped with a front bench seat and with a 3-seater bench seat in the passenger compartment, it will carry up to 6 people. There is plenty of space for materials and equipment behind the bench seat – space you can make impressive use of thanks to the high payload. Depending on the vehicle length, the Vito Crew Cab provides a cargo volume of up to 4.1 m<sup>3</sup>.

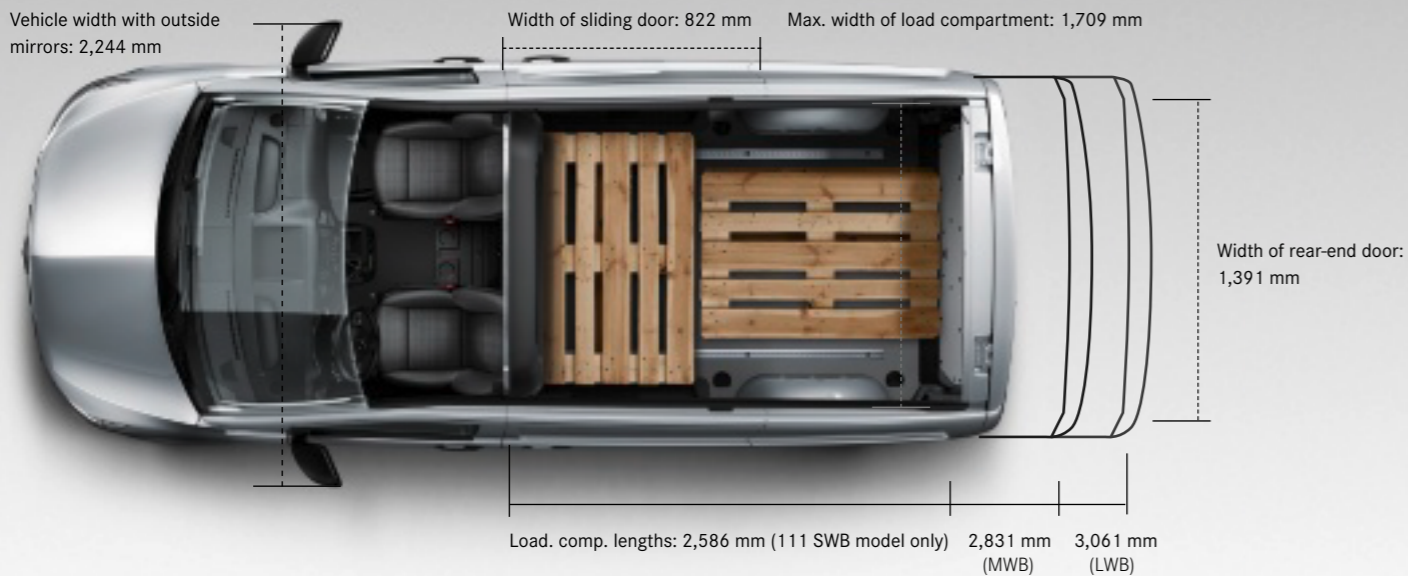
- Space for up to 6 people and plenty of cargo
- Choice of two different wheelbases (MWB and LWB). Load compartment volume of up to 4.1 m<sup>3</sup> in conjunction with the LWB version
- Two different power and torque outputs and a fully automatic 9G-TRONIC transmission
- Vehicle height of just 1,910 mm, fits into most garages, multi-storey car parks, underground car parks and car washes

# Vito Panel Van. <sup>(6)</sup>



**Person icon**

Max. payload in kg at perm. GVW: up to 1252  
Towing capacity braked/unbraked in kg: up to 2,500/750  
Max. perm. gross combination weight in kg: up to 5,550



**Truck icon**

Max. load compartment volume in m<sup>3</sup>: up to 6.6

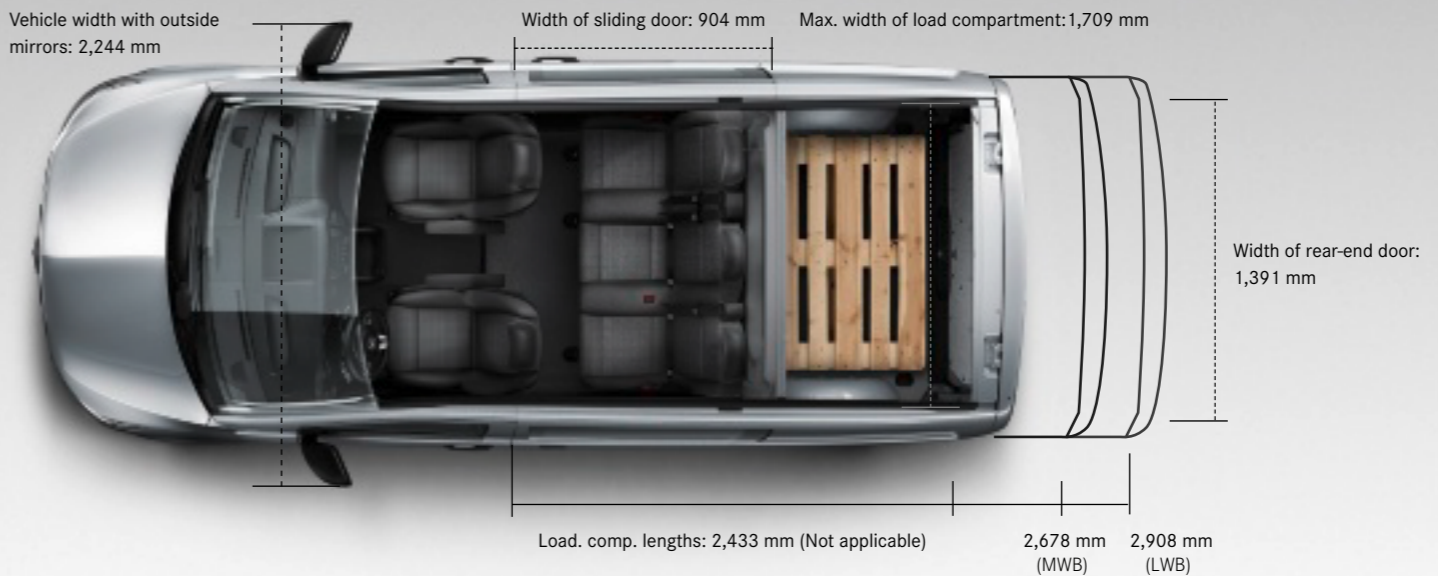
Overseas model shown.

# Vito Crew Cab. <sup>(6)</sup>



**Person icon**

Max. payload in kg at perm. GVW: up to 850  
Towing capacity braked/unbraked in kg: 2,500/750  
Max. perm. gross combination weight in kg: 5,550



**Truck icon**

Max. load compartment volume in m<sup>3</sup>: up to 4.1

Overseas model shown.

# Vito Panel Van and Vito Crew Cab Highlights.



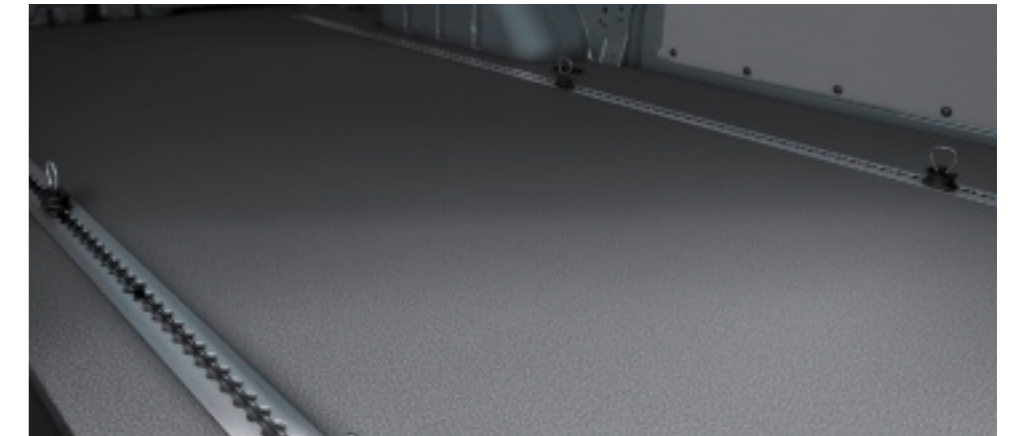
The adaptive brake lights with their conspicuous flashing assist to reduce the reaction time of the drivers of following vehicles and therefore prevent rear-end collisions.



The LED light strip at the top in the rear illuminates the load compartment so that there are minimum shadows and thus improves orientation when loading and unloading. Optional.



Thanks to the optional 2-seater front bench seat, there is added accommodation in the cockpit: an additional seat with a three-point seat belt and height-adjustable headrest



The robust wood floor can bear heavy loads, protects the cargo area floor from damage, is slip-resistant, easy to clean and improves thermal and acoustic insulation. Optional load securing system shown.



The automatic driving lights function switches the driving lights on or off, depending on light conditions.



The sliding door on the left-hand side of the vehicle offers additional access, which makes loading and unloading and getting in and out of the vehicle faster and more flexible.

Overseas model shown.



The cruise control system with Limiter maintains a pre-selected speed and thereby makes driving more relaxed and more economical – especially on long distances. Standard on 111 models.



The front comfort seats with comfort head restraint and armrest can be adjusted in eight directions to individual seating requirements and thus enables relaxed driving even on long distances. Seat cushion length can also be adjusted for more comfort. Standard on all models except 111 models.

Overseas model shown.



The specialist in professional **passenger transport** operations.  
The Vito Tourer.

Overseas model shown.

The Vito Tourer has space for up to 8 people including a driver with its flexible twin 3-seater bench seats in the rear passenger compartment. It boasts a comprehensive list of standard features to deliver the reliability, safety and economy that have come to characterise Mercedes-Benz vans. Passengers settle into seats which promise and deliver on a comfortable journey, surrounded by an interior that is characterised by class-leading workmanship and materials. As for enjoyment, you'll find that the Vito Tourer is as aesthetically appealing to look at as it is dynamically satisfying and ergonomically pleasing to drive.

- Audio 30 with 7-inch LCD touchscreen, digital radio and Bluetooth®
- Smart phone integration via Android Auto™ and Apple CarPlay™
- Active Parking Assist PARKTRONIC with reversing camera and front and rear sensors
- ATTENTION Assist <sup>(7)</sup>, Crosswind Assist <sup>(7)</sup> and Lane Keeping Assist

# Vito Tourer Highlights.



The adaptive brake lights with their conspicuous flashing assist to reduce the reaction time of the drivers of following vehicles and therefore prevent rear-end collisions.



Electrical operation allows opening and closing of the sliding door at the touch of a button, without the driver having to get out or the passengers having to operate the sliding door. Optional feature shown.



The automatic driving lights function switches the driving lights on or off, depending on light conditions.



The Vito Tourer provides comfortable seating for up to eight people (including driver). The rear seat backrest angle and head restraint height can be adjusted to suit individual demands. The outer sides of the bench seat feature armrests.



The black velour floor mats visually enhance the cockpit.



The comfort driver's seat with comfort head restraint and armrest can be adjusted in eight directions to individual seating requirements and enables relaxed driving even on long journeys. Seat cushion length can also be adjusted for more comfort.

Overseas model shown.



The tinted glazing in the rear with black-tinted glass protects the interior from prying eyes and effectively shields passengers and cargo from intense sunlight and heat.



The roof railing allows the transportation of additional cargo above the roof and gives the vehicle an individual look. The roof railing has a maximum load capacity of up to 150 kg and a height of 48 mm.

Overseas model shown.



# Vito and Vito Tourer Comfort Highlights.



The high-quality luxury overhead control unit has numerous lighting functions, some of which use innovative LED technology with optical fibres.



With its finely graduated gears, the 9G-TRONIC automatic transmission keeps engine speed and fuel consumption as low as possible and ensures maximum comfort when pulling away and changing gears. Excludes 111 models.



The LED Intelligent Light System improves the vision of the driver and therefore driving safety, as it can automatically adjust the illumination of the road surface to various driving conditions. Standard on 119 models. Optional on all other models.



The reversing camera produces a photo-realistic representation of the area directly behind the vehicle on the multimedia system display and can help prevent damage when parking and manoeuvring.

Overseas model shown.

# Radio and navigation.



The standard Audio 30 features a high-resolution 17.8 cm (7-inch) touchscreen as well as smartphone integration and a USB-C connection.



The optional Audio 40 expands the Audio 30 features with the addition of a navigation system.

Overseas model shown.

# Expert assistance for relaxed driving.

The range of assistance systems for the Vito and Vito Tourer is exemplary in the mid-size van and people mover segments. In difficult driving situations as well as when parking and manoeuvring, highly developed systems can come to the driver's aid for a safer and more relaxed experience at the wheel.

#### Standard safety systems<sup>1</sup>:

- ATTENTION ASSIST
- Crosswind Assist
- HOLD function (116, 119 and Vito Tourer models)
- Lane Keeping Assist
- Front airbags - driver and front passenger
- Thorax airbags - driver and front passenger
- Window airbags - driver and front passenger
- Window airbags (A-D pillars) (Vito Tourer)
- Hill Start Assist
- Automatic driving lights
- Rain sensor
- Adaptive Brake Lights
- ABS anti-lock braking system
- Electronic Stability Program ADAPTIVE ESP®
- Reversing camera with dynamic steering lines
- Active Parking Assist PARKTRONIC with front and rear sensors (116, 119 and Vito Tourer models)
- LED Intelligent Light System with High Beam Assist Plus (119 models)

<sup>1</sup> Standard on all models unless specified.  
Overseas model shown.

# Assistance systems.



Crosswind Assist can detect track offset caused by strong crosswind gusts in good time and help the driver to stay in lane. A sudden track offset of the vehicle can cause inappropriate steering reactions on the part of the driver.



The Blind Spot Assist<sup>(7)</sup> (visual and audible warning) and Lane Keeping Assist (haptic and audible warnings) can help the driver stay in lane or change lanes on multi-lane roads.



The Active Parking Assist feature can detect parking spaces and supports with active steering interventions when parking in longitudinal or lateral parking spaces. Optional on all 111 models.



The ATTENTION ASSIST system can help to recognise signs of fatigue and therefore provides you with increased safety, particularly when driving at night and on long journeys.



The ATTENTION ASSIST system can help to avoid momentary nodding off and therefore provides you with increased safety, in particular when driving at night and on long journeys. The system provides you with a visual and audible warning if it identifies typical signs of fatigue or attention lapse, and suggests taking a break.



The Blind Spot Assist<sup>(7)</sup> function can help prevent accidents when changing lanes, for example on motorways.



Crosswind Assist can reduce swerving caused by wind gusts with braking interventions on the upwind wheels.



The Lane Keeping Assist function can help prevent accidents caused by the vehicle unintentionally leaving its lane.

# Colours and upholstery. Vito and Vito Tourer.

## Non-metallic paints



**Arctic White (9147)**  
(Vito Van/Crew Cab,  
Vito Tourer)  
Standard



**Jupiter Red (3589)**  
(Vito Van/Crew Cab,  
Vito Tourer)



**Steel Blue (5389)**  
(Vito Van/Crew Cab,  
Vito Tourer)



**Broom Yellow (1212)**  
(Vito Van/Crew Cab  
(excludes 119 models))



**Pebble Grey (7701)**  
(Vito Van/Crew Cab,  
Vito Tourer)



**Granite Green (6580)**  
(Vito Van/Crew Cab,  
Vito Tourer)

## Metallic paints



**Dark Graphite Grey (7831)**  
(Vito Van/Crew Cab,  
Vito Tourer)



**Selenite Grey (7992)**  
(Vito Van/Crew Cab,  
Vito Tourer)



**Brilliant Silver (9744)**  
(Vito Van/Crew Cab,  
Vito Tourer)



**Rock Crystal White (9134)**  
(Vito Tourer)



**Cavansite Blue (5890)<sup>1</sup>**  
(Vito Van/Crew Cab,  
Vito Tourer)

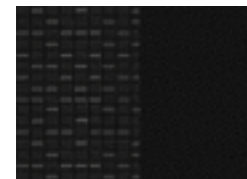


**Obsidian Black (9197)**  
(Vito Van/Crew Cab,  
Vito Tourer)



**Hyacinth Red (3334)**  
(Vito Van/Crew Cab,  
Vito Tourer)

## Interior upholstery



**Black Caluma fabric  
seat upholstery (VF4)**  
(Vito Van and Crew Cab)



**Black leatherette  
seat upholstery (VU9)**  
(Vito Tourer)

<sup>1</sup> Colour not available after June 2022 production.

# Fuel Consumption.

Model	CO2 urban [g/km]	CO2 extra-urban [g/km]	CO2 combined [g/km]	FC urban [l/100 km]	FC extra-urban [l/100 km]	FC combined [l/100 km]
<b>Panel Van</b>						
111 SWB Van FWD	205	143	166	7.8	5.4	6.3
116 MWB Van RWD	209	167	181	8	6.4	6.9
119 MWB Van RWD	212	175	189	8.1	6.7	7.2
111 LWB Van FWD	205	143	166	7.8	5.4	6.3
116 LWB Van RWD	213	171	185	8.1	6.5	7.1
119 LWB Van RWD	271	178	193	8.3	6.8	7.4
<b>Crew Cab</b>						
116 MWB Crew Cab RWD	218	176	190	8.3	6.7	7.2
119 MWB Crew Cab RWD	223	181	197	8.5	6.9	7.5
116 LWB Crew Cab RWD	218	176	190	8.3	6.7	7.2
119 LWB Crew Cab RWD	223	181	197	8.5	6.9	7.5
<b>Vito Tourer</b>						
Vito Tourer 116 MWB RWD	214	170	185	8.2	6.5	7.1

The declared fuel consumption figures are determined by testing under standardised laboratory conditions in accordance with ADR 81/02. The fuel consumption figures stated are for the purposes of comparison amongst vehicles tested under the same technical procedures only. Real world energy consumption figures may vary and are influenced by many factors such as, individual driving style, load, traffic, ambient temperature and vehicle condition.

# Technical data.

	Vito Panel Van		
	111 CDI Panel Van (SWB/LWB)	116 CDI Panel Van (MWB/LWB)	119 CDI Panel Van (MWB/LWB)
Body			
Front-wheel drive	●	n/a	n/a
Rear-wheel drive	n/a	●	●
OM622 DE   84 kW (114 hp) at 3,800 rpm   4 cylinders   Diesel Euro 5b   1,598 cc   270 Nm at 1,500–2,500 rpm	●	n/a	n/a
OM654 DE   120 kW (163 hp) at 4,200 rpm   4 cylinders   Diesel Euro 6b   1,950 cc   380 Nm at 1,350–2,400 rpm	n/a	●	n/a
OM654 DE   140 kW (190 hp) at 4,200 rpm   4 cylinders   Diesel Euro 6b   1,950 cc   440 Nm at 1,350–2,600 rpm	n/a	n/a	●
Permissible gross weight (kg)	3050	3050 (3200 optional)	3050 (3200 optional)
Payload (kg)*	1260 / 1198	1091 / 1056	1065 / 1030
Towing capacity (braked / unbraked) (kg)	2000/750	2500/750	2500/750
Cargo Volume (m³)	5.5/6.6	6.0/6.6	6.0/6.6
Number of seats	2/3 optional	2/3 optional	2/3 optional

Vito Crew Cab		Vito Tourer People Mover
116 CDI Crew Cab (MWB/LWB)	119 CDI Crew Cab (MWB/LWB)	Vito Tourer 116 MWB
n/a	n/a	n/a
●	●	●
n/a	n/a	n/a
●	●	●
n/a	●	n/a
3050 (3200 optional)	3050 (3200 optional)	3100
858 / 833	832 / 807	766
2500/750	2500/750	2500/750
3.6/4.1	3.6/4.1	n/a
5/6 optional	5/6 optional	8

\* Payload figures are estimates only and calculated based on a basic specification vehicle. Real life payload figures may vary depending on a number of factors. Customers should make additional enquires based on the specifics of their vehicle to obtain accurate payload figures.

# Mercedes-Benz quality – in every area.

## Servicing and repairs.



The Mercedes-Benz Vito & Vito Tourer has a 25,000km or 1 year (whichever occurs first) service interval. All Mercedes-Benz authorised workshops are staffed and equipped for excellence and will assist in keeping your Vito & Vito Tourer operating as intended. Our Mercedes-Benz technicians complete training every year to ensure they are up-to-date with current technology.

Mercedes-Benz Genuine Parts undergo rigorous material and functional testing and are engineered to fit your vehicle perfectly. All Mercedes-Benz Genuine Parts have a 2 year parts warranty.

## Your Vito is covered.



### Warranty.

Our comprehensive Mercedes-Benz Vans manufacturer's warranty means peace of mind for five years or until the vehicle has travelled up to 250,000km. You're covered for parts and labour charges incurred whilst rectifying a manufacturing defect relating to materials or workmanship.

### Roadside Assist.

In the unlikely event of needing assistance, all you have to do is call. Mercedes-Benz Vans Road Care is designed to provide you with assistance in case of a breakdown anywhere in Australia – 24 hours a day, 365 days a year. Standard cover comes at no extra cost on your Vito & Vito Tourer during the manufacturer's warranty period or while the vehicle is operating under an approved ServiceCare Pre-Paid Plan and is designed to provide real peace of mind motoring.

For further information and terms and conditions, please visit [www.mercedes-benz.com.au/vans](http://www.mercedes-benz.com.au/vans) to view the Mercedes-Benz Vans Road Care Service brochure.

\* Mercedes-Benz Vans Road Care applies to vehicles purchased from an authorised Mercedes-Benz dealer, whilst vehicle is under warranty.

## Vans ServiceCare



### ServiceCare.

Mercedes-Benz ServiceCare makes your vehicle maintenance simple and flexible by providing competitive capped price servicing and repair choices to suit your specific van or ute requirements.

With ServiceCare your vehicle maintenance costs are transparent and will assist your expenditure planning whether you own one van or operate a large fleet.

Better still, with ServiceCare you can rest assured that your vehicle is serviced and repaired according to factory schedules, with Mercedes-Benz trained technicians and Genuine Parts.



## Book your service anytime, anywhere.

### Mercedes-Benz Van and Ute Online Service Booking.

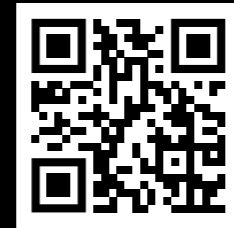
Online service booking is a quick and simple way to book your next service appointment. Within the booking platform you can choose your preferred date and time, and have the opportunity to request a service loan car if available.



# Experience a new level of connectivity with the Mercedes me Adapter\*

With the complimentary Mercedes me Adapter and smartphone app, you can connect your Van or Ute to you and everything that is important to you. Enjoy a world of innovative services designed to make your life and mobility easier.

A world of connectivity awaits. Speak to us today to find out more.



\* Terms, conditions and exclusions apply.

## Appendix.

---

<sup>1</sup> Various safety systems and features included in Mercedes-Benz vehicles are driver assistance aids only and the driver at all times remains solely responsible for maintaining proper control of the vehicle, ensuring safety and monitoring the driving environment and complying with all applicable road rules.

---

<sup>2</sup> **Warranty:** Warranty is applicable to new Mercedes-Benz Sprinter vehicles for 5 years from the date of first registration or until the vehicle has travelled 250,000 kilometers, (whichever occurs first). Warranty start time may differ for demonstrator vehicles. 12V battery warranty is 3 years/250,000km whichever occurs first. Excludes customers with specific warranty arrangements with Mercedes-Benz. For full terms, conditions and exclusions please refer to the warranty statement here [www.mercedes-benz.com.au/vans/en/ownership/service-and-maintenance/warranty](http://www.mercedes-benz.com.au/vans/en/ownership/service-and-maintenance/warranty).

---

**Roadside Assist:** Mercedes-Benz Road Care is available for the duration of any Mercedes-Benz New Vehicle Warranty Period whilst the warranty remains valid against your vehicle. Terms, condition and exclusions apply. For further information visit your authorised retailer.

---

<sup>3</sup> All figures and values shown are indicative and are intended as a guide only. Unless otherwise stated, figures and values are calculated on basic specification vehicles in unladen conditions. Actual figures and values may vary and are influenced by many additional factors such as optional equipment. Weight tolerance of +/- 5% in production. Customers should make additional enquiries based on the specifics of their vehicle to obtain accurate figures and values.

---

<sup>4</sup> Phone and internet compatibility, connectivity and capabilities differ between devices, markets and vehicles. Check the compatibility of your device and vehicle in Australia at [www.mercedes-benz-mobile.com](http://www.mercedes-benz-mobile.com). Data plan required for internet connection.

---

<sup>5</sup> Unless stated otherwise, all applications, multimedia, connectivity and software solutions (Applications and Data Content) contained within or associated with the vehicle are licenced to users subject to terms and conditions. In some cases, the Applications and Data Content may be provided by third parties, not Mercedes-Benz Australia/Pacific Pty Ltd (MBAuP) and may be subject to third party terms and conditions. Whilst MBAuP shall use its reasonable endeavours to provide an uninterrupted experience, we cannot guarantee ongoing or uninterrupted supply noting that such services may subject to interruption, change, discontinuance or limitations. Please refer to the relevant terms and conditions for more information including device compatibility, connectivity and capability requirements.

---

<sup>6</sup> All figures in millimetres. They are indicative figures only based on basic specification vehicles and in unladen condition. Actual figures and values may vary and are influenced by many additional factors such as optional equipment. Customers should make additional enquiries based on the specifics of their vehicle to obtain accurate figures.

---

<sup>7</sup> Mercedes-Benz Van products manufactured from 1 November 2021 onwards may be missing some or all of the following driver assistance and safety systems/features: Active Brake Assist, Active Distance Assist DISTRONIC and Blind Spot Assist which includes Rear Cross Traffic Alert. Driver assistance and safety systems/features included in Mercedes-Benz vehicles are driver assistance aids only and the driver at all times remains solely responsible for maintaining proper control of the vehicle, ensuring safety and monitoring the driving environment and complying with all applicable laws including but not limited to road rules (eg: adjusting the speed of the vehicle in accordance with the designated speed limits).

---

Date finalised: 28 February 2022

**IMPORTANT!** This brochure has been compiled by Mercedes-Benz Vans Australia Pacific Pty Ltd to provide a general indication of the models available in Australia. Some of the features, optional extras and/or colours shown may not be available in Australia or may only be available in a different specification. Additionally, some models, features, optional extras and/or colours may only be available in combination with others. Some equipment depicted either on vehicle illustrations or separately may be non standard or options and may, where applicable, be available at an additional cost. For current information on the availability, design features and prices of all models, features, optional extras and/or colours available in Australia, you should contact your authorised Mercedes-Benz Vans Dealer at [www.mercedes-benz.com.au/dealers](http://www.mercedes-benz.com.au/dealers) or go to [www.mercedesbenz.com.au/vans](http://www.mercedesbenz.com.au/vans)

All of the information contained in this brochure was correct as at February 2022. However, the manufacturer reserves the right to discontinue, make changes to design and specifications to vehicles or optional equipment without notice.

This publication and its text, images, graphics and their arrangements are the property of Mercedes-Benz Australia Ltd ©.